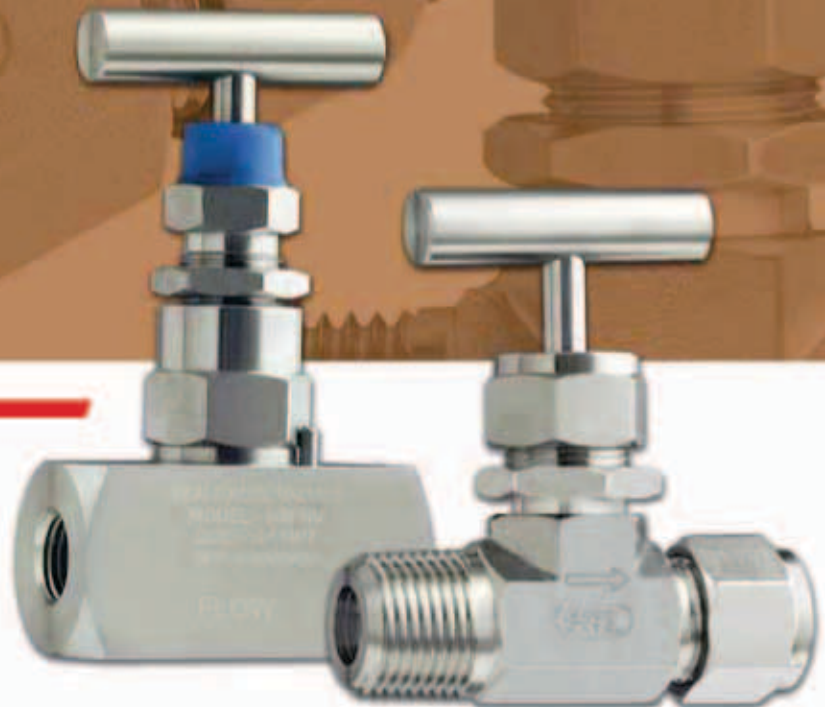
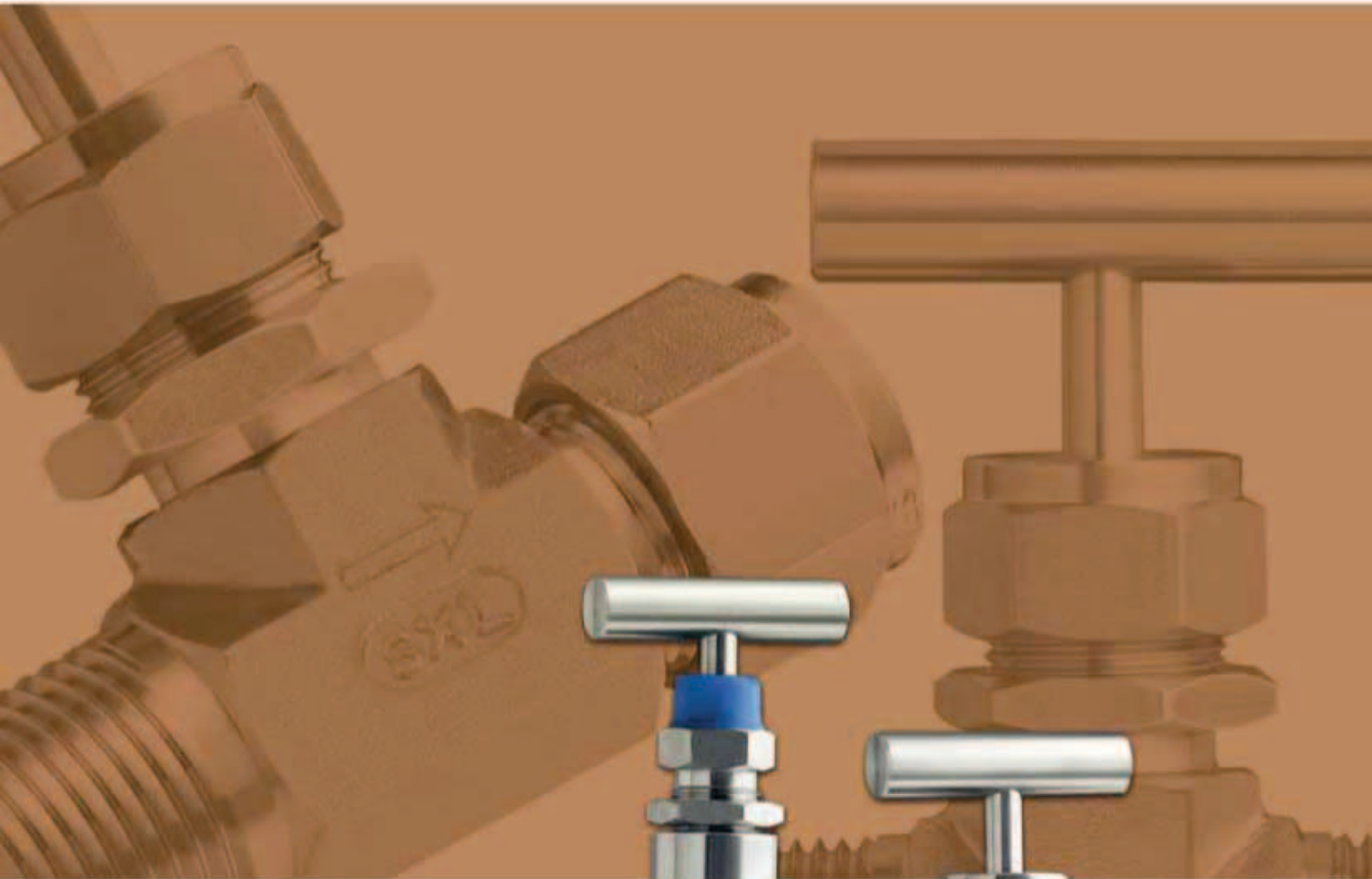




Forged & Bar Stock Body Needle Valves



Make the leak free connections with Sealexcel products at economical price.



SEALEXCEL® (INDIA) PVT. LTD. is a fast growing manufacturing company in the field of design, development, production and marketing of high quality valves and fittings for International and domestic markets, since



Product Range

- ◆ Twin Ferrule tube fittings
- ◆ Single Ferrule tube Fittings
- ◆ Tube fittings as per DIN 2353
- ◆ 37° Flared tube fittings
- ◆ Stainless Steel push in fittings
- ◆ Precision pipe fittings and Adaptors
- ◆ Stainless steel quick connect couplings
- ◆ Bar Stock and Forged body needle Valves
- ◆ Instrumentation Ball Valves

Our Focus

SEALEXCEL® manufactures all the above products to very stringent tolerances under rigid quality controlled procedures approved to ISO 9001:2000 quality management systems. The products are tested with continuous research and development programs to withstand the demand of high performance world class quality products for instrumentation and process tubing. These products are used in the environments like Oil, Gas, Chemical, Petrochemical, Nuclear, Power plant, Pharmaceutical, Hydraulic, Pneumatic, Marine, Packaging, Printing Industries etc.

Manufacturing Facility

SEALEXCEL® has two well equipped manufacturing units in India having modern manufacturing facilities with CNC lathes, Single Spindle Auto Screw machines, Capsten lathes, Thread Rolling and many other machines to provide good quality products at economical prices.

Product warranty

All the SEALEXCEL® products come with a warranty of 12 months from the date of shipment against any defect in material or workmanship. The warranty stands for replacement of determined defective parts only.

Quality Policy

We at SEALEXCEL® not only strive to meet all of our customer's requirements but also enhance customer's expectation by providing them excellent products at economical price in time

This is achieved by

- ◆ Continuously improving the products, process and systems.
- ◆ Ensuring involvement of all the employees and enhancing their competency.
- ◆ Complying with all applicable statutory and regulatory Requirements.

The Goal

SEALEXCEL® is committed to make every effort towards producing world class products at economical price.



INSTRUMENTATION NEEDLE VALVES

SEALEXCEL® Forged Body Needle Valves provide flexibility when designing miniaturized or piping system upto 1/2" pipe or Tube Connection.

Available with Fine-Lok™ / Well-Lok™ Tube Fittings. NPT/BSPT Male or Female, threads connection suitable for Instrumentation, process tubing, Hydraulic application etc.

FEATURES

- Available in material SS316
- Available in Straight and Angle Style
- Panel Mounting Standard
- PTFE Stem Packing are standard
- Flow Coefficient (Cv) from 0.37 to 1.8
- Orifice sizes : 0.172" (4.4mm), 0.250" (6.4mm), 0.312" (8mm), 0.375" (9.5mm).
- Pressure upto 5000 PSIG

STEM :-

SEALEXCEL® Needle Valves are available with choice of optional stem to provide greater flexibility.

Non-Rotating (NR) :-

This Standard self centering non rotating valve seat typically used in high cycle application to extend the valve life. It is designed to prevent galling between the seat and stem.

V-Stem (VS) :-

V-Stem tip used for general purpose liquid and gases.

Soft Seat (SS) :-

A soft seat stem requires a lower sealing torque, the soft seat is replaceable. It is suitable for temperature upto 120°C

Regulating Stem (RS) :-

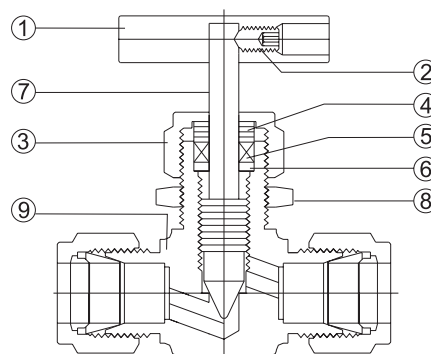
It is used where some degree of flow control is required.

TECHNICAL DATA :-

The Temperature and Pressure rating for a standard valve with PTFE packing

Temperature	Pressure	
	psig	bar
-54°C to 38°C	5000	340
-54°C to 93°C	4295	292
-54°C to 148°C	3875	264
-54°C to 176°C	3715	254
-54°C to 204°C	3560	242
-54°C to 232°C	3435	234

MATERIAL OF CONSTRUCTIONS



Sr.No.	VALVE BODY MATERIAL
1	Bar Handle - SS316
2	Set Screw - SS316
3	Packing Nut - SS316
4	Upper Gland - SS316
5	Packing - PTFE
6	Lower Gland - SS316
7	Stem - SS316
8	Panel Nut - SS316
9	Forged Body - SS316

ORDERING INFORMATION

Add a stem type and code to the basic ordering number

Example : GNV-250/NR
MMNV - 250N/VS

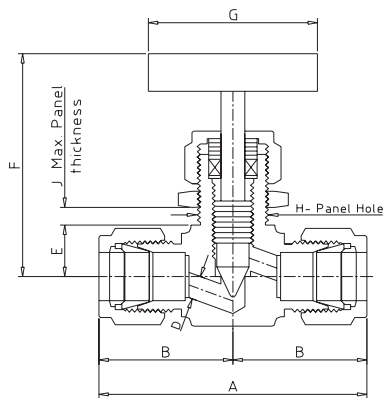
AVAILABLE SIZES

Fractional Size :-
Upto 1/2" pipe or Tube Connections
Metric size :-
Upto 12mm Tube Connection

Pipe Thread Description

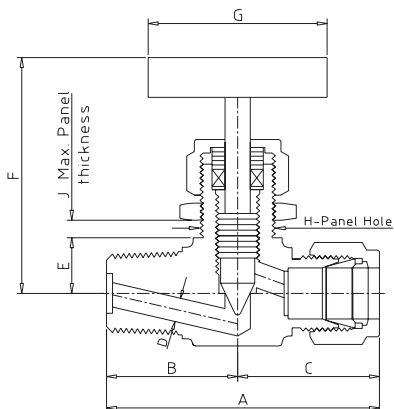
Code	Pipe Thread	Specification
N	NPT	ANSI B1.20.1
RT	BSPT	BS21, ISO 7/1
RG	BSPP	ISO 228/1, BS 2779

GNV Series NEEDLE VALVES



Connection Size		Dimensions in mm									Cv	Part No.
Inlet Tube OD	Outlet Tube OD	A	B	D	E	F	G	H	J			
1/4"	1/4"	57.6	28.8	4.4	11.2	52.3	38.0	13.5	4.2	0.37	GNV-250	
3/8"	3/8"	66.6	33.3	6.4	14.0	57.0	50.0	19.8	6.4	0.73	GNV-375	
1/2"	1/2"	71.2	35.6	6.4	14.0	57.0	50.0	19.8	6.4	0.73	GNV-500	
6 MM	6MM	57.6	28.8	4.4	11.2	52.3	38.0	13.5	4.2	0.37	GNV-6M	
8 MM	8MM	59.4	29.7	4.4	11.2	52.3	38.0	13.5	4.2	0.37	GNV-8M	
10 MM	10MM	66.6	33.3	6.4	14.0	57.0	50.0	19.8	6.4	0.73	GNV-10M	
12 MM	12MM	71.2	35.6	6.4	14.0	57.0	50.0	19.8	6.4	0.73	GNV-12M	

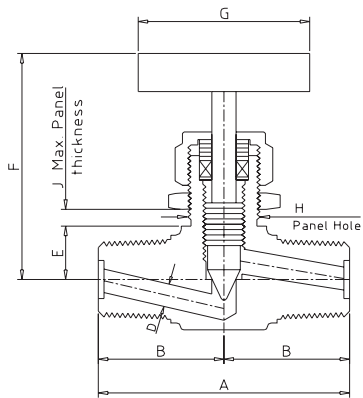
MTNV Series NEEDLE VALVES



Connection Size		Dimensions in mm										Cv	Part No.
Inlet Male NPT	Outlet Tube OD	A	B	C	D	E	F	G	H	J			
1/4"	1/4"	53.8	25.0	28.8	4.4	11.2	52.3	38.0	13.5	4.2	0.37	MTNV-250-250N	
1/4"	3/8"	61.9	28.6	33.3	6.4	14.0	57.0	50.0	19.8	6.4	0.73	MTNV-250-375N	
3/8"	3/8"	61.9	28.6	33.3	6.4	14.0	57.0	50.0	19.8	6.4	0.73	MTNV-375-375N	
3/8"	1/2"	64.2	28.6	35.6	6.4	14.0	57.0	50.0	19.8	6.4	0.73	MTNV-375-500N	

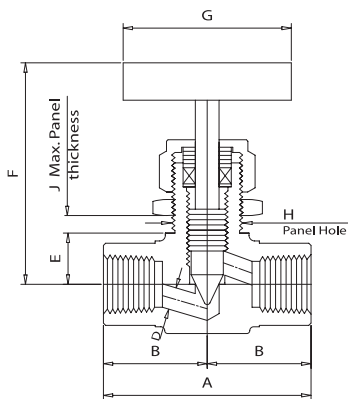
Dimensions for reference only and are subject to change.

MMNV Series NEEDLE VALVES



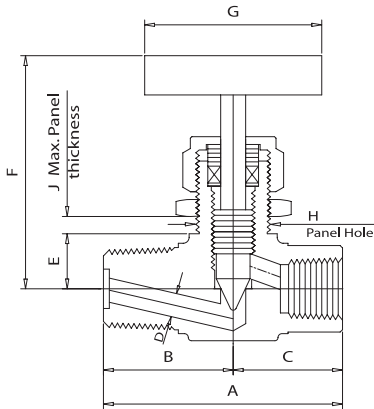
Connection Size		Dimensions in mm									Cv	Part No.
Inlet Male NPT	Outlet Male NPT	A	B	D	E	F	G	H	J			
1/8"	1/8"	42.0	21.0	4.4	11.2	52.3	32.0	13.5	4.2	0.37	MMNV-125N	
1/4"	1/4"	50.0	25.0	6.4	14.0	57.0	38.0	13.5	6.4	0.73	MMNV-250N	
3/8"	3/8"	57.2	28.6	6.4	14.0	57.0	50.0	19.8	6.4	0.73	MMNV-375N	
1/2"	1/2"	66.0	33.0	8.0	14.0	57.0	50.0	19.8	6.4	1.20	MMNV-500N	

FFNV Series NEEDLE VALVES



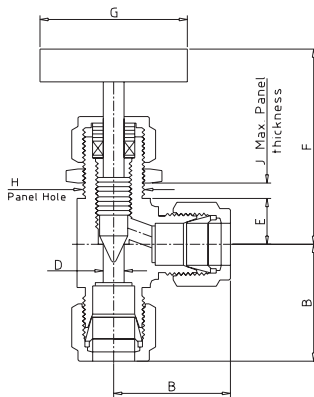
Connection Size		Dimensions in mm									Cv	Part No.
Inlet Female NPT	Outlet Female NPT	A	B	D	E	F	G	H	J			
1/8"	1/8"	42.0	21.0	4.4	11.2	52.3	32.0	13.5	4.2	0.37	FFNV-125N	
1/4"	1/4"	54.0	27.0	6.4	14.0	57.0	38.0	19.8	6.4	0.73	FFNV-250N	
3/8"	3/8"	54.0	27.0	6.4	14.0	57.0	50.0	19.8	6.4	0.73	FFNV-375N	
1/2"	1/2"	76.2	38.1	9.5	19.1	100	50.0	26.2	6.4	1.80	FFNV-500N	

MFNV Series NEEDLE VALVES



Connection Size		Dimensions in mm										Part No.
Inlet Male NPT	Outlet Female NPT	A	B	C	D	E	F	G	H	J	Cv	
1/4"	1/4"	55.6	27.2	28.4	6.4	14.0	57.0	50.0	19.8	6.4	0.73	MFNV-250-250N
1/2"	1/2"	76.2	38.1	38.1	9.5	19.5	100	76.0	26.2	6.4	1.80	MFNV-500-500N

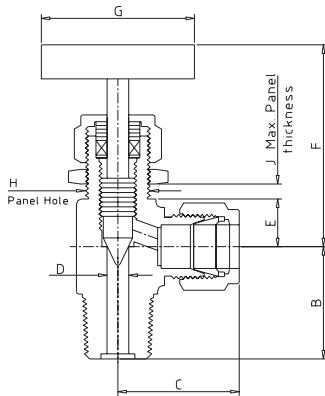
GANV Series ANGLE NEEDLE VALVES



Connection Size		Dimensions in mm								Part No.
Inlet Tube OD	Outlet Tube OD	B	D	E	F	G	H	J	Cv	
1/4"	1/4"	28.8	4.4	11.2	52.3	38.0	13.5	4.2	0.37	GANV-250
3/8"	3/8"	33.3	6.4	14.0	57.0	50.0	19.8	6.4	0.73	GANV-375
1/2"	1/2"	35.6	6.4	14.0	57.0	50.0	19.8	6.4	0.73	GANV-500
6 MM	6 MM	28.8	4.4	11.2	52.3	38.0	13.5	4.2	0.37	GANV-6M
8 MM	8 MM	29.7	4.4	11.2	52.3	38.0	13.5	4.2	0.37	GANV-8M
10 MM	10 MM	33.3	6.4	14.0	57.0	50.0	19.8	6.4	0.73	GANV-10M
12 MM	12 MM	35.6	6.4	14.0	57.0	50.0	19.8	6.4	0.73	GANV-12M

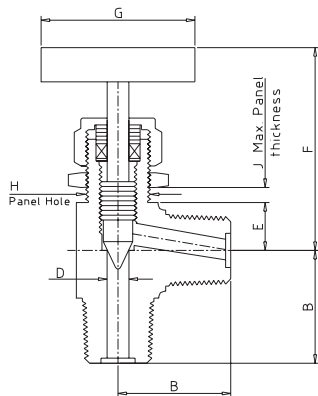
Dimensions for reference only and are subject to change.

MTANV Series ANGLE NEEDLE VALVES



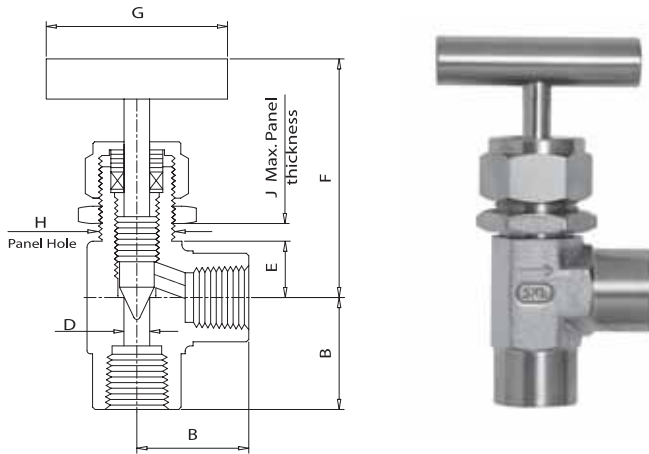
Connection Size		Dimensions in mm									Cv	Part No.
Inlet Male NPT	Outlet Tube OD	B	C	D	E	F	G	H	J			
1/4"	1/4"	25.0	28.8	4.4	11.2	52.3	38.0	13.5	4.2	0.37	MTANV-250-250N	
1/4"	3/8"	28.6	33.3	6.4	14.0	57.0	50.0	19.8	6.4	0.73	MTANV-250-375N	
3/8"	3/8"	28.6	33.3	6.4	14.0	57.0	50.0	19.8	6.4	0.73	MTANV-375-375N	
3/8"	1/2"	28.6	35.6	6.4	14.0	57.0	50.0	19.8	6.4	0.73	MTANV-375-500N	

MMANV Series ANGLE NEEDLE VALVES



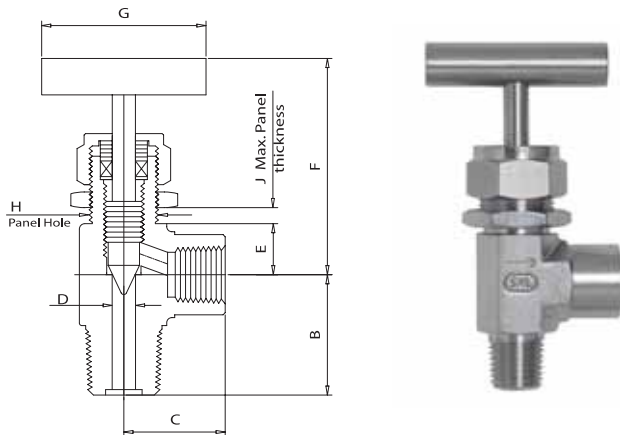
Connection Size		Dimensions in mm								Cv	Part No.
Inlet Male NPT	Outlet Male NPT	B	D	E	F	G	H	J			
1/8"	1/8"	21.0	4.4	11.2	52.3	32.0	13.5	4.2	0.37	MMANV-125N	
1/4"	1/4"	25.0	6.4	14.0	57.0	38.0	13.5	6.4	0.73	MMANV-250N	
3/8"	3/8"	28.6	6.4	14.0	57.0	50.0	19.8	6.4	0.73	MMANV-375N	
1/2"	1/2"	33.0	8.0	14.0	57.0	50.0	19.8	6.4	1.20	MMANV-500N	

MFNV Series NEEDLE VALVES



Connection Size		Dimensions in mm								Cv	Part No.
Inlet Female NPT	Outlet Female NPT	B	D	E	F	G	H	J			
1/8"	1/8"	21.0	4.4	11.2	52.3	32.0	13.5	4.2	0.37	FFANV-125N	
1/4"	1/4"	27.0	6.4	14.0	57.0	38.0	19.8	6.4	0.73	FFANV-250N	
3/8"	3/8"	27.0	6.4	14.0	57.0	50.0	19.8	6.4	0.73	FFANV-375N	
1/2"	1/2"	38.1	9.5	19.1	100	50.0	26.2	6.4	1.80	FFANV-500N	

MTNV Series NEEDLE VALVES



Connection Size		Dimensions in mm									Cv	Part No.
Inlet Male NPT	Outlet Female NPT	B	C	D	E	F	G	H	J			
1/4"	1/4"	28.4	27.0	6.4	14.0	57.0	38.0	19.8	6.4	0.73	MFANV-250-250N	
1/2"	1/2"	38.1	38.1	9.5	19.1	100	50.0	26.2	6.4	1.80	MFANV-500-500N	

INSTRUMENTATION NEEDLE VALVE

SEALEXCEL® Bar Stock Needle Valves are design and Manufactured to meet the requirements of Corrosive service, High Pressure Sampling systems, Sour Gas application etc.

FEATURES

- Available in material SS316 confirm to NACE MR01-75
- Bar Stock Body
- PTFE Stem Packing are Standard
- Self Centering Non-Rotating Valve Seat
- Standard Seat - SS316 Seat to SS316 Body
Optional : Stellite SS316 Seat to SS316 Body, Hastelloy-C Seat to SS316 Body
- Male and Female NPT or BSPT/BSP, Socket Weld connections.
- Orifice Size : 0.172" (4.4mm) to 0.312" (8mm)

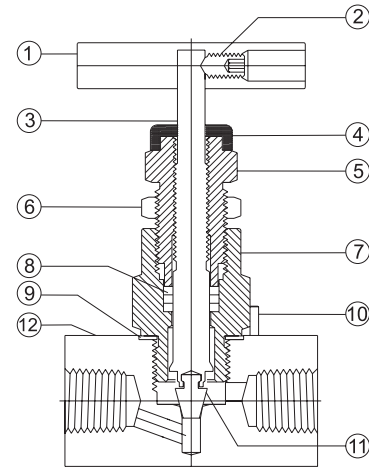
OPERATING PARAMETERS

Working Pressure : Upto 6000 PSI
Working Temperature : Upto 232°C

AVAILABLE SIZES

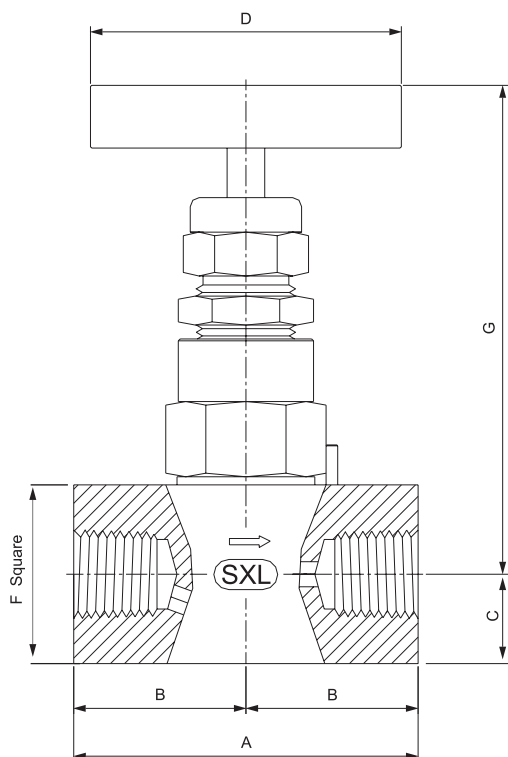
Upto 1" NPT or BSPT
or BSPP Female Pipe thread

MATERIAL OF CONSTRUCTIONS



Sr.No.	VALVE BODY MATERIAL
1	Bar Handle - SS316
2	Set Screw - SS316
3	Stem - SS316
4	Dust Seal Cap - Polypropylene
5	Upper Gland Body - SS316
6	Lock Nut - SS316
7	Lower Gland Body - SS316
8	Packing - PTFE
9	Washer - SS316
10	Locking Pin - SS316
11	Needle Tip - SS316
12	Valve Body - SS316

BSFNV Series BAR STOCK NEEDLES VALVES

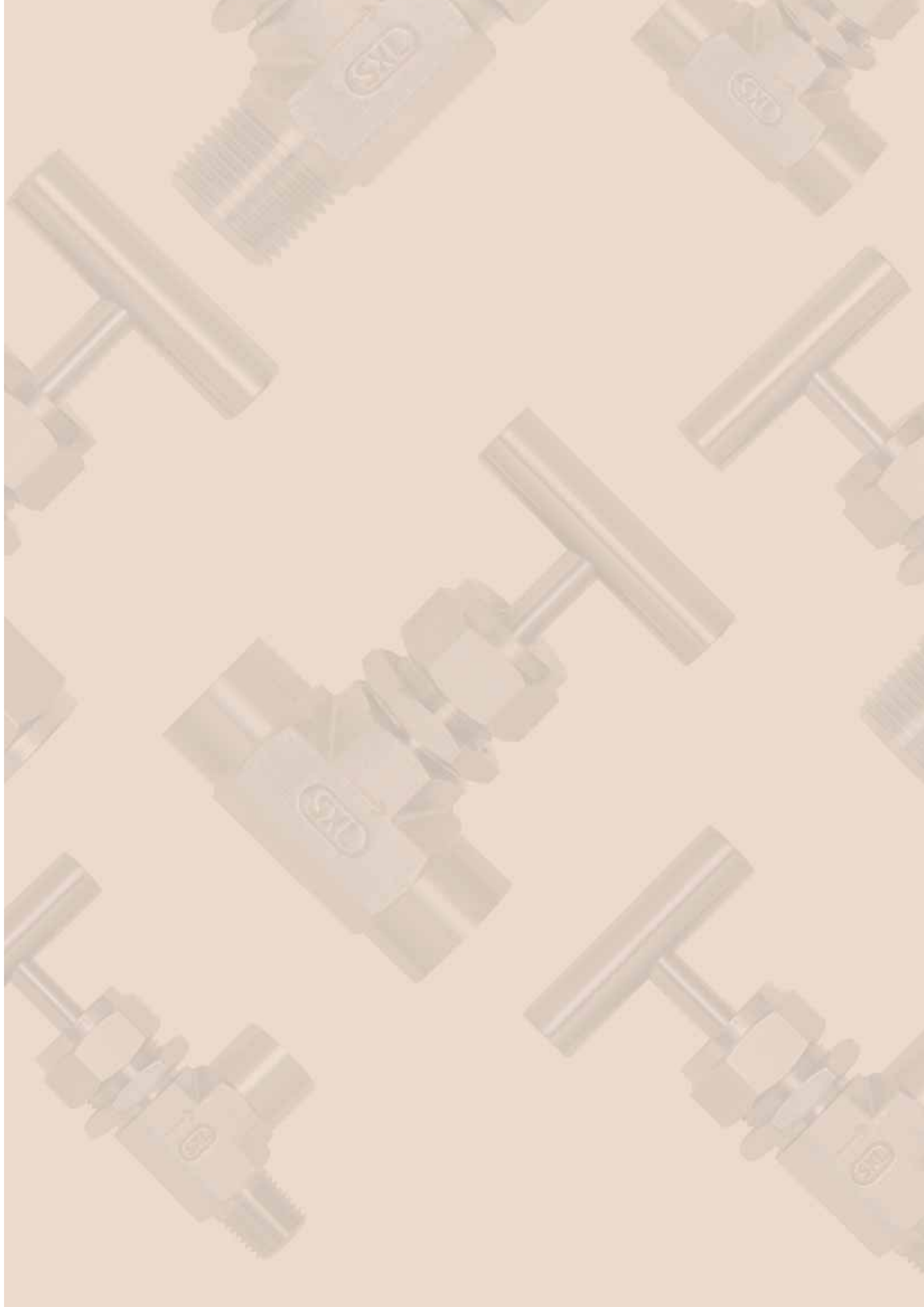


Connection Size		Orifice		Dimensions in mm												Part No.
Inlet NPT-F	Outlet NPT-F	mm	in	A		B		C		D		F		G		
				mm	in	mm	in	mm	in	mm	in	mm	in	mm	in	
1/4"	1/4"	4.4	0.173	70	2.76	35.0	1.38	15.0	0.59	64.0	2.52	30.0	1.18	100	3.94	BSFNV-250N
3/8"	3/8"	7.0	0.276	65	2.56	32.5	1.28	15.0	0.59	64.0	2.52	30.0	1.18	100	3.94	BSFNV-375N
1/2"	1/2"	7.0	0.276	72	2.83	36.0	1.42	15.0	0.59	64.0	2.52	30.0	1.18	100	3.94	BSFNV-500N
3/4"	3/4"	10.0	0.394	82	3.23	41.0	1.62	20.0	0.79	82.0	3.23	40.0	1.57	125	4.80	BSFNV-750N
1"	1"	10.0	0.394	89	3.50	44.5	1.75	25.0	0.99	82.0	3.23	50.0	1.97	130	5.0	BSFNV-1000N

BSWNV Series BAR STOCK SOCKET WELD NEEDLE VALVES

Connection Size		Orifice		Dimensions in mm												Part No.
Inlet Socket weld	Outlet Socket weld	mm	in	A		B		C		D		F		G		
				mm	in	mm	in	mm	in	mm	in	mm	in	mm	in	
1/2"	1/2"	10	0.394	82.0	3.23	41.0	1.62	20	0.79	82.0	3.23	40.0	1.57	122.0	4.80	BSWNV-500

Dimensions for reference only and are subject to change.





www.sealexcel.com



SEALEXCEL® (INDIA) PVT. LTD.

Registered office & Unit I :
56 & 61, Veena Dalvai Industrial Estate, S. V. Road,
Oshiwara, Jogeshwari (West), Mumbai - 400 102. INDIA
Ph.: (+91-22) 2678 6885, 2678 8534, 6694 4124
Fax : (+91-22) 2678 1426, 6694 4126
E-mail : sales@sealexcel.com

Unit II :
Plot no. 300/1 & 2, at Post - Mahi, Via Chhapi,
Pirojpur - Mahi Road, Taluka - Vadgam,
Dist - Banaskantha, North - Gujarat,
Pin - 385 210. INDIA

Catalogue No. 06-03/NV
