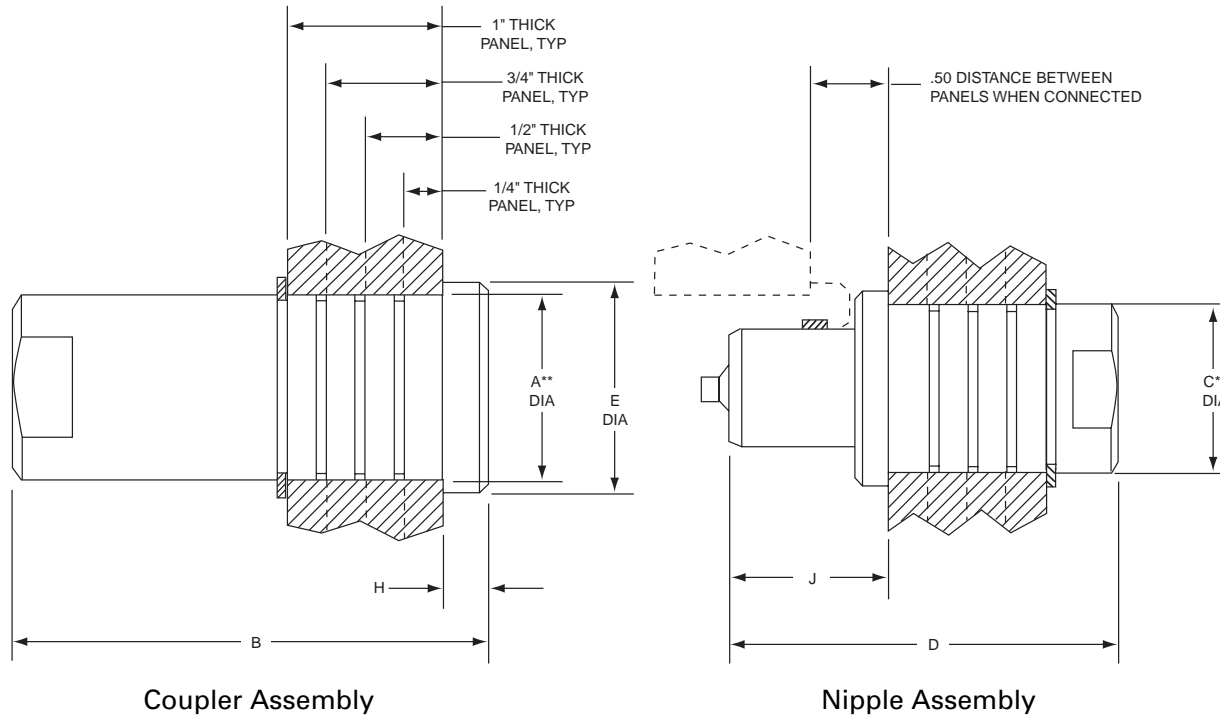


HP SERIES

Panel Mount Couplings 1/8" - 3/4" Sizes



**Recommended hole size.

Snap-tite
COMPONENTS, INC.

Quick Disconnect & Valve Division
201 Titusville Road
Union City, PA 16438-8699 USA
PH: 814-438-3821 FAX: 814-438-3069
e-mail: qd&v_sales@snap-tite.com
www.snap-tite.com

Snap-tite
EUROPE, B.V.

Industrial Estate
Whitemill - Wexford
Republic of Ireland
PH: 353-53-41566 FAX: 353-53-41582
e-mail: snap-tite@snap-tite.iol.ie
www.snap-tite.com

ISO-9001 Certified

| Unit Size | A Dia +/- .005 | | B +/- .03 | | C Dia +/- .005 | | D +/- .03 | | E Dia | | H | | J | |
|-----------|----------------|-------|-----------|--------|----------------|-------|-----------|-------|-------|-------|-----|------|------|-------|
| | in | mm | in | mm | in | mm | in | mm | in | mm | in | mm | in | mm |
| 1/8" | .875 | 22.22 | 1.80 | 45.72 | .875 | 22.22 | 1.88 | 47.75 | 1.00 | 25.40 | .24 | 6.10 | .80 | 20.32 |
| 1/4" | .938 | 23.81 | 2.03 | 51.56 | .938 | 23.81 | 2.03 | 51.56 | 1.25 | 31.75 | .24 | 6.10 | .87 | 22.10 |
| 3/8" | 1.203 | 30.56 | 3.06 | 77.72 | 1.203 | 30.56 | 2.50 | 63.50 | 1.35 | 34.29 | .24 | 6.10 | 1.03 | 26.16 |
| 1/2" | 1.438 | 36.53 | 3.09 | 78.49 | 1.438 | 36.53 | 2.93 | 74.42 | 1.63 | 41.40 | .24 | 6.10 | 1.43 | 36.32 |
| 3/4" | 1.750 | 44.45 | 3.95 | 100.33 | 1.750 | 44.45 | 3.38 | 85.85 | 2.00 | 50.80 | .24 | 6.10 | 1.42 | 36.07 |

Contact factory for verification of dimensions prior to any machining.

HP SERIES

How to Order

Part Number Example: SHPN8-8F

| Material ¹ | Series | Coupling Half | Coupling Size | End Fitting Size | Type of ¹ End Fitting | Seal ¹ Material |
|-----------------------|--------|-----------------------------|---------------|------------------------------|--------------------------------------|----------------------------|
| S Stainless Steel | HP | C Coupler N Nipple | 2 - 1/8" | 2 - 1/8" | F | ** |
| | | | 4 - 1/4" | 4 - 1/4" | Female NPSF | Nitrile (AMS3215) |
| | | | 6 - 3/8" | 6 - 3/8" | M | V |
| | | | 8 - 1/2" | 8 - 1/2" | Male NPT | Viton (MIL-R-25897) |
| | | | 12 - 3/4" | 12 - 3/4" | RP Female British Parallel BS2779 | JF Nitrile (MIL-P-5315) |
| | | | | EF Female SAE O'Ring Boss | M Nitrile (MIL-P-25732) | |
| | | | | EM Male SAE 37° | E Ethylene Propylene | |
| | | | | | AS Aflas | |
| | | | | | K Kalrez | |

**Standard seal-
No letter designation required.

¹For other end fittings and seal or coupling materials, consult the factory.

Pressure Ratings psi (bar)

| Size | Working Pressure | Proof Pressure | Burst Pressure |
|------|------------------|----------------|----------------|
| 1/8" | 10000 (690) | 15000 (1034) | 20000 (1379) |
| 1/4" | 10000 (690) | 15000 (1034) | 20000 (1379) |
| 3/8" | 5000 (345) | 7500 (517) | 10000 (690) |
| 1/2" | 5000 (345) | 7500 (517) | 10000 (690) |
| 3/4" | 5000 (345) | 7500 (517) | 10000 (690) |

NOTE: Pressure ratings were established under static pressure conditions. For high impulse applications, multiply the above pressure ratings by .6 for approximate pressure ratings.

Burst pressures listed were taken at the point at which failure rendered the quick-disconnect inoperative.

Air Inclusion on Connect, Spillage on Disconnect

| Size (inches) | Spillage (cc) | Inclusion (cc) |
|---------------|---------------|----------------|
| 1/8 | .4 | .4 |
| 1/4 | 1.2 | 1.2 |
| 3/8 | 2.7 | 2.7 |
| 1/2 | 4.2 | 4.2 |
| 3/4 | 15.5 | 15.5 |

Note:

Air inclusion at 0 psi internal pressure.

Spillage at 15 psi (1 bar) internal pressure.

Separation Forces at 1000 psi (69 bar)

| Size (inches) | Forces in Pounds (kilograms) |
|---------------|------------------------------|
| 1/8 | 200 (91) |
| 1/4 | 220 (100) |
| 3/8 | 440 (200) |
| 1/2 | 700 (318) |
| 3/4 | 1350 (612) |

Maximum Recommended Connect/Disconnect Pressure

0 thru working pressure