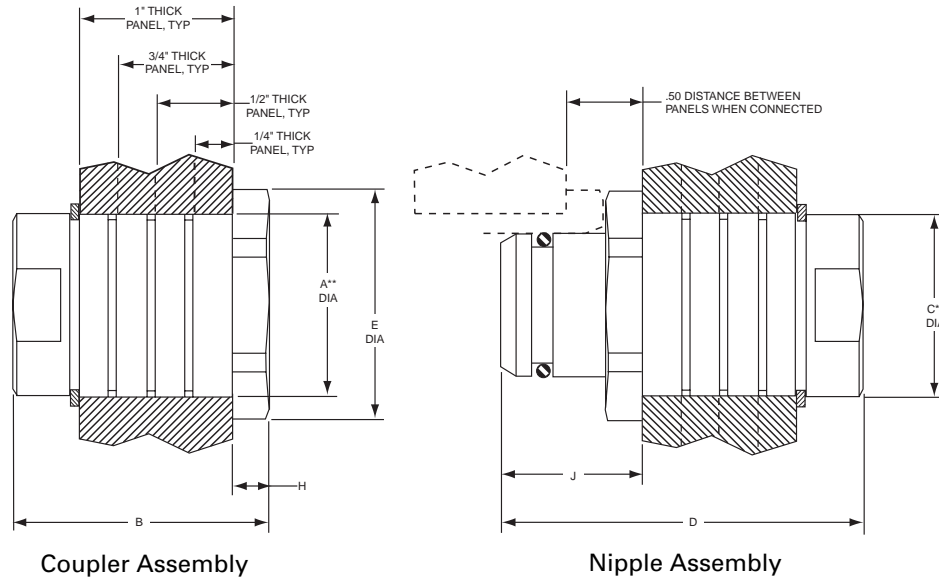


SJ SERIES

Panel Mount Couplings 1/4" - 5" Sizes



** Recommended hole size.

Unit Size	A Dia +/- .005		B +/- .03		C Dia +/- .005		D +/- .03		E Dia		H		J	
	in	mm	in	mm	in	mm	in	mm	in	mm	in	mm	in	mm
1/4"	.750	19.05	1.75	44.45	.750	19.05	2.30	58.42	1.00	25.40	.24	6.10	.79	20.07
3/8"	.875	22.23	1.75	44.45	.875	22.23	2.30	58.42	1.13	28.70	.24	6.10	.84	21.34
1/2"	1.031	26.19	1.75	44.45	1.031	26.19	2.30	58.42	1.25	31.75	.24	6.10	.88	22.35
3/4"	1.250	31.75	1.75	44.45	1.250	31.75	2.50	63.50	1.50	38.10	.24	6.10	.93	23.62
1"	1.875	47.63	2.00	50.80	1.875	47.63	2.75	69.85	2.25	57.15	.24	6.10	1.03	26.16
1-1/4"	2.125	53.98	2.00	50.80	2.125	53.98	2.75	69.85	2.50	63.50	.24	6.10	1.03	26.16
1-1/2"	2.375	60.33	2.00	50.80	2.375	60.33	2.75	69.85	2.75	69.85	.24	6.10	1.03	26.16
2"	2.875	73.03	2.00	50.80	2.875	73.03	2.75	69.85	3.38	85.85	.24	6.10	1.10	27.94
2-1/2"	3.468	88.09	2.55	64.77	3.468	88.09	2.92	74.17	3.85	97.79	.24	6.10	1.27	32.25
3"	4.125	104.78	2.60	66.04	4.125	104.78	2.92	74.17	4.50	114.30	.24	6.10	1.27	32.25
4"	5.125	130.17	2.60	66.04	5.125	130.17	2.92	74.17	5.50	139.70	.24	6.10	1.27	32.25
5"	6.000	152.40	2.75	69.85	6.000	152.40	3.14	79.76	6.50	165.10	.24	6.10	1.12	28.45

Contact factory for verification of dimensions prior to any machining.

Snap-tite
COMPONENTS, INC.

Quick Disconnect & Valve Division
201 Titusville Road
Union City, PA 16438-8699 USA
PH: 814-438-3821 FAX: 814-438-3069
e-mail: qd&v_sales@snap-tite.com
www.snap-tite.com

Snap-tite
EUROPE, B.V.

Industrial Estate
Whitemill - Wexford
Republic of Ireland
PH: 353-53-41566 FAX: 353-53-41582
e-mail: snap-tite@snap-tite.iol.ie
www.snap-tite.com

ISO-9001 Certified

SJ SERIES

How to Order

Part Number Example: SSJN24-24F

Material ¹	Series	Coupling Half	Coupling Size	End Fitting Size	Type of ¹ End Fitting	Seal ¹ Material
High strength steel - no letter designation required S Stainless Steel	SJ	C Coupler N Nipple	4 - 1/4"	4 - 1/4"	F	**
			6 - 3/8"	6 - 3/8"	Female NPSF ²	Nitrile (AMS3215)
			8 - 1/2"	8 - 1/2"	M	V
			12 - 3/4"	12 - 3/4"	Male NPT	Viton (MIL-R-25897)
			16 - 1"	16 - 1"	RP	JF
			20 - 1-1/4"	20 - 1-1/4"	Female British Parallel BS2779	Nitrile (MIL-P-5315)
			24 - 1-1/2"	24 - 1-1/2"	EF	M
			32 - 2"	32 - 2"	Female SAE O'Ring Boss	Nitrile (MIL-P-25732)
			40 - 2-1/2"	40 - 2-1/2"	EM	E
			48 - 3"	48 - 3"	Male SAE 37°	Ethylene Propylene
			64 - 4"	64 - 4"		AS
			80 - 5"	80 - 5"		Aflas
						K
						Kalrez

¹For other end fittings and seal or coupling materials, consult the factory.

²NPSF Female straight pipe thread on sizes to 1" taper pipe on sizes above 1".

Separation Forces at 1000 psi (69 bar)

Size (inches)	Forces in Pounds (kilograms)
1/4	150 (68)
3/8	200 (91)
1/2	310 (141)
3/4	670 (304)
1	1100 (499)
1-1/4	1600 (725)
1-1/2	2775 (1259)
2	4000 (1814)
2-1/2	7070 (3210)
3	10175 (4626)
4	17000 (7730)
5	24800 (11275)

Pressure Ratings psi (bar)

Size	Steel	Stainless Steel
1/4"	11000 (758)	10000 (689)
3/8"	11000 (758)	8000 (551)
1/2"	11000 (758)	8000 (551)
3/4"	9000 (620)	7000 (482)
1"	6000 (413)	4000 (275)
1-1/4"	5000 (344)	1000 (69)
1-1/2"	5000 (344)	3000 (206)
2"	4000 (275)	1000 (69)
2-1/2"	1000 (69)	400 (27)
3"	750 (51)	400 (27)
4"	500 (34)	300 (21)
5"	500 (34)	300 (21)

Burst pressures listed were taken at the point at which failure rendered the quick-disconnect inoperative. (Proof pressure equals 1-1/2 times working pressure. Burst pressure equals 2 times working pressure.)

NOTE: Pressure ratings were established under static pressure conditions. For high impulse applications, multiply the above pressure ratings by .6 for approximate pressure ratings.

Maximum Recommended Connect/Disconnect Pressure

Not Applicable